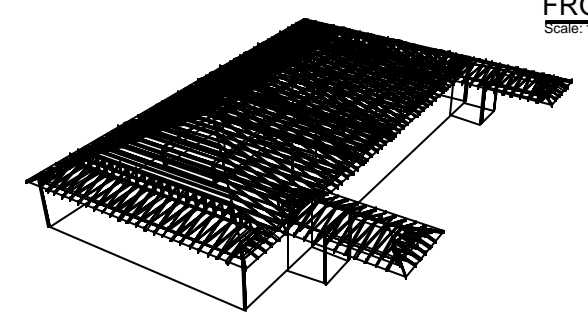
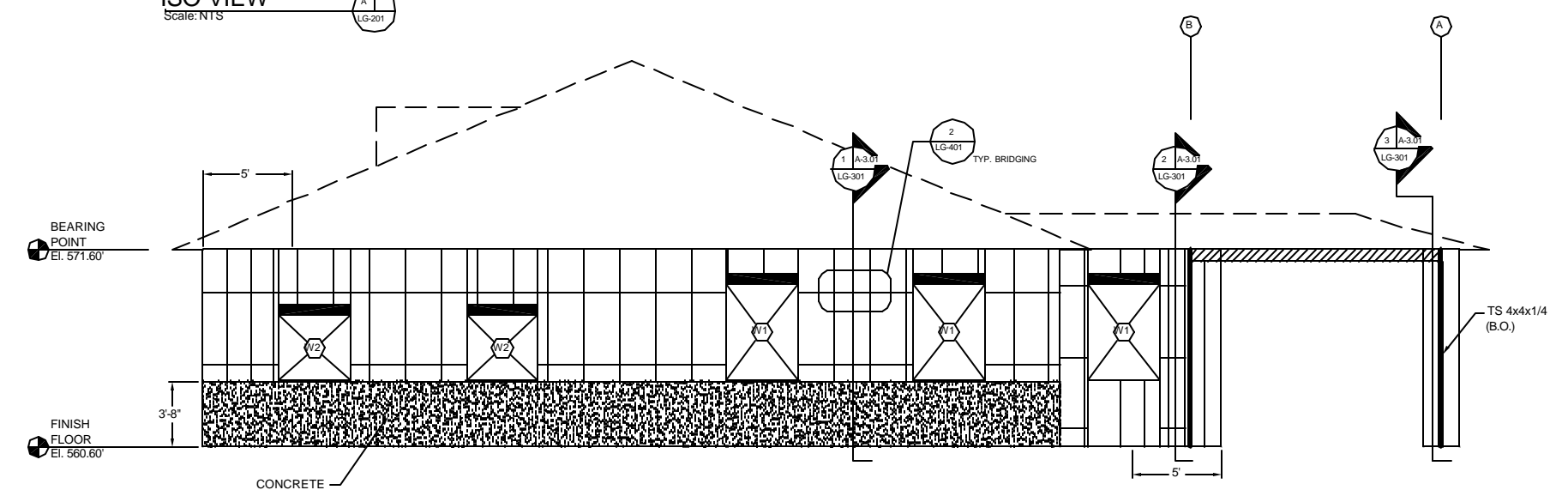


FRONT ELEVATION
Scale: 1/4" = 1'



ISO VIEW
Scale: N.T.S.

THE 1/2" PLYWOOD APPLIED TO THE EXTERIOR SIDE OF THE STUDS WILL PROVIDE THE RACKING RESISTANCE FOR THE BUILDING. INSTALL THE PLYWOOD BEFORE THE TRUSSES ARE PLACED. THE PLYWOOD IS TO BE ATTACHED TO THE STUDS WITH #8 (MINIMUM) SCREWS AT 4" O.C. AT PLYWOOD EDGES AND 12" O.C. ELSEWHERE.



LEFT SIDE ELEVATION
Scale: 1/4" = 1'

Notes:

1. All drawings pertain to light gage members. See architectural drawings for dimensions and additional information.
2. All connections are screw fastened unless noted otherwise.
3. LWSF material is manufactured by Steel Stud Manufacturers Association members.
4. The contractor is to verify all dimensions.
5. Stud spacing is 16" o.c. within 5' of corners and 24" o.c. elsewhere.

Legend:

1. 600S162-54 (50 ksi)
2. 800S200-68 (50 ksi)
3. 600T125-54
4. #10 screw
5. Hilti X-DNI PAF (3/4" long)
6. Hilti X-DNI PAF (1 5/8" long)
7. TSN StiffClip LS

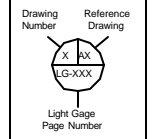
REVISIONS		
NO.	DATE	BY

LSA Inc.
1111 Manheim Pike
Lancaster, PA
17601
ph.: 717-390-2798
fax: 717-390-7247
www.lsa-inc.net

JOB NAME
NEW E.A.S.F.
ENDOSCOPY CENTER

LOCATION
SELLERSVILLE,
PA

TITLE
ELEVATIONS



LSA INC.
LANCASTER, PA 17601
717-390-2798 VOICE
717-390-7247 FAX
SHOP DRAWING STATUS
PENDING REVIEW & APPROVAL
APPROVED FOR CONSTRUCTION

Project Number
2003-038

Date
08/04/03

Drawn By
AMK

Drawing Number
LG-201

Scale
1/4" = 1'

Sheet Number
2 OF 5