

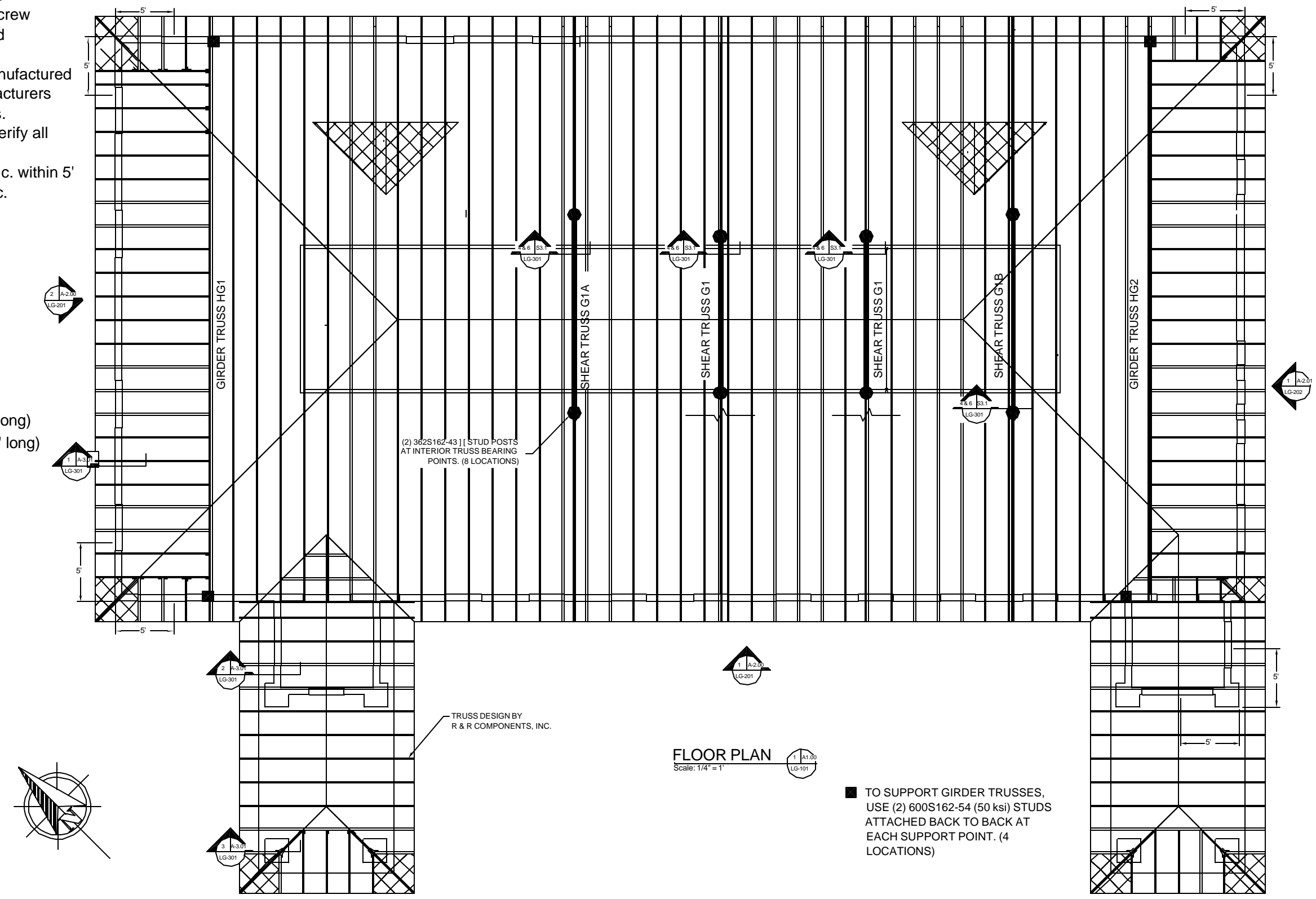
# Notes:

1. All drawings pertain to light gage members. See architectural drawings for dimensions and additional information.
2. All connections are screw fastened unless noted otherwise.
3. LWSF material is manufactured by Steel Stud Manufacturers Association members.
4. The contractor is to verify all dimensions.
5. Stud spacing is 16" o.c. within 5' of corners and 24" o.c. elsewhere.

# Legend:

1. 600S162-54 (50 ksi)
2. 800S200-68 (50 ksi)
3. 600T125-54
4. #10 screw
5. Hilti X-DNI PAF (  $\frac{3}{4}$ " long)
6. Hilti X-DNI PAF (  $1\frac{5}{8}$ " long)
7. TSN StiffClip LS

THE  $\frac{1}{2}$ " PLYWOOD APPLIED TO THE EXTERIOR SIDE OF THE STUDS WILL PROVIDE THE RACKING RESISTANCE FOR THE BUILDING. INSTALL THE PLYWOOD BEFORE THE TRUSSES ARE PLACED. THE PLYWOOD IS TO BE ATTACHED TO THE STUDS WITH #8 (MINIMUM) SCREWS AT 4" O.C. AT PLYWOOD EDGES AND 12" O.C. ELSEWHERE.



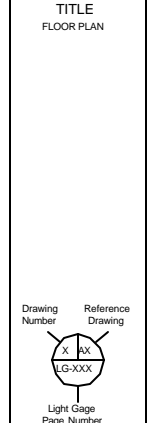
REVISIONS		
NO.	DATE	BY
△		
△		
△		
△		
△		

LSA Inc.  
1111 Manheim Pike  
Lancaster, PA  
17601  
ph.: 717-390-2798  
fax: 717-390-7247  
www.lsa-inc.net

JOB NAME  
NEW E.A.S.F.  
ENDOSCOPY CENTER

LOCATION  
SELLERSVILLE,  
PA

TITLE  
FLOOR PLAN



Project Number  
2003-038  
Date  
06/04/03  
Drawn By  
AMK  
Drawing Number  
LG-101  
Scale  
1/4" = 1'  
Sheet Number  
1 OF 5

LSA INC.  
LANCASTER, PA 17601  
717-390-2798 VOICE  
717-390-7247 FAX  
SHOP DRAWING STATUS  
PENDING REVIEW & APPROVAL  
APPROVED FOR CONSTRUCTION